



AN CUONG
BUILDING MATERIALS

AN CUONG BUILDING MATERIALS., JSC

Address: An Phat Complex, Hai Duong City, Vietnam

Website: www.ancuongflooring.com

Email: apa.salesadmin1@anphatholdings.com

Email: info@ancuongflooring.com

Contact: (+84) 963 01 7676

AN CUONG BUILDING MATERIALS
SPC FLOORING & PVC WALL PANELS

CONTENTS

Factory overview

04-05

SPC Flooring

06

PVC Wall Panels

28

Factory overview

Location:

An Phat Complex, Hai Duong City, Vietnam

Human resource: **200** personnel

Annual capacity: **4,500,000** sqm



SPC Flooring introduction

SPC Flooring has the newest generation of floor covering features:
Enhanced stability, high performance, 100% waterproof, high-density solid core, and indentation resistance.

SPC can be easily installed on a variety of subfloors including concrete or existing vinyl flooring. SPC is completely formaldehyde-free and uses components that are safe for residential and commercial installations.

Structure of SPC Flooring

Anti-fade
UV coating

Transparent wear
resistant layer (0.3-0.5mm)

Printed
Décor Layer

Rigid SPC
core

Underlayment
(Optional)



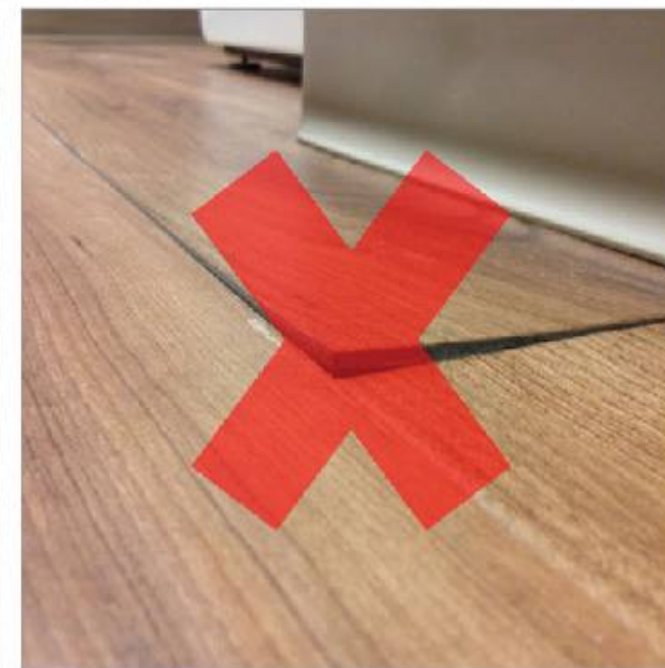
Technical data of SPC Flooring

Thickness (Core + Wearlayer)	3.5 ~ 6.0 mm	
Total thickness	4.5 ~ 8.0 mm	
Dimension (Customized)	inch	mm
	48.03x5.94	1220x183
	48.03x8.98	1220x228
	60x7.20	1524x183
	60x8.98	1524x228
Underlayment	IXPE, EVA 1.0mm, 1.5mm, 2.0mm	
SPC Flooring click	UNICLIC	

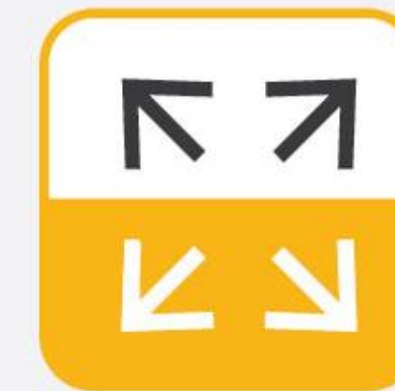
Advantages of SPC Flooring



WATERPROOF AND DAMPPROOF



NO CURLING EVEN
IN HIGH-TEMPERATURE
ENVIRONMENTS



EXTREME STABILITY, WITH ONLY MINOR
EXPANSION/ SHRINKAGE (~0.06%)
COMPARED TO LVT, WPC, OR LAMINATE FLOORING



NO FORMALDEHYDE



BEST-IN-CLASS
INDENTATION
RESISTANCE



FIRE RETARDANT



SLIP RESISTANCE



SCRATCH RESISTANCE



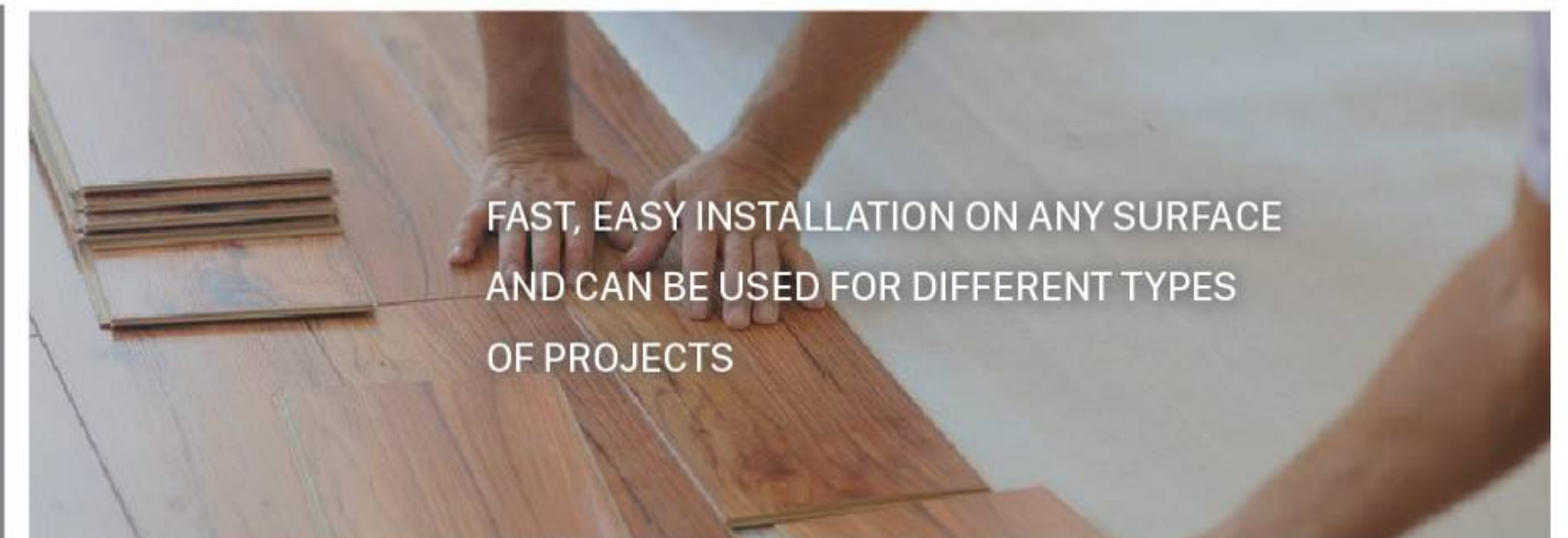
EASY TO CLEAN



SOUND ABSORBANCE

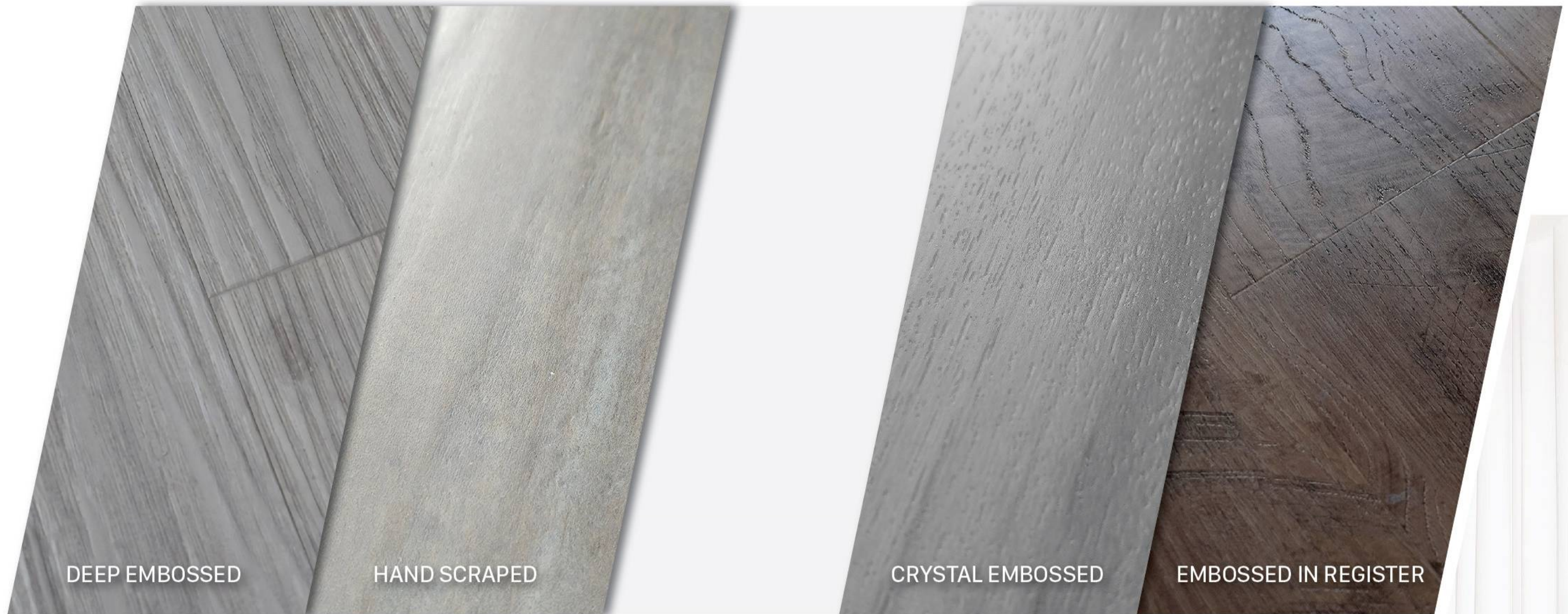


HIGH STRENGTH
(10-20 YEARS
OF USE)



FAST, EASY INSTALLATION ON ANY SURFACE
AND CAN BE USED FOR DIFFERENT TYPES
OF PROJECTS

Surface of SPC Flooring



Colors of SPC Flooring

WOOD

*Other decorative film colors are available as custom orderst

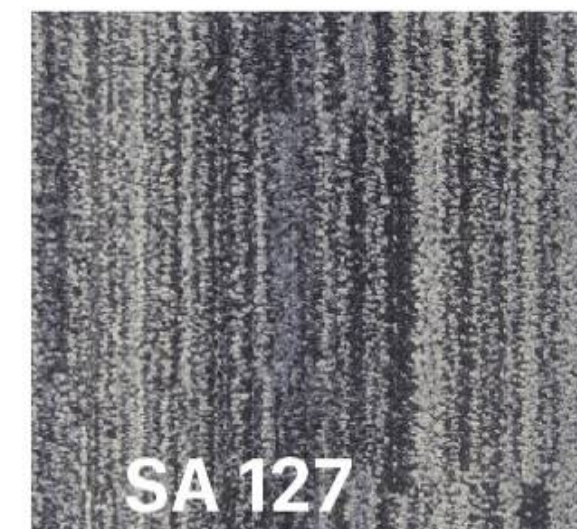
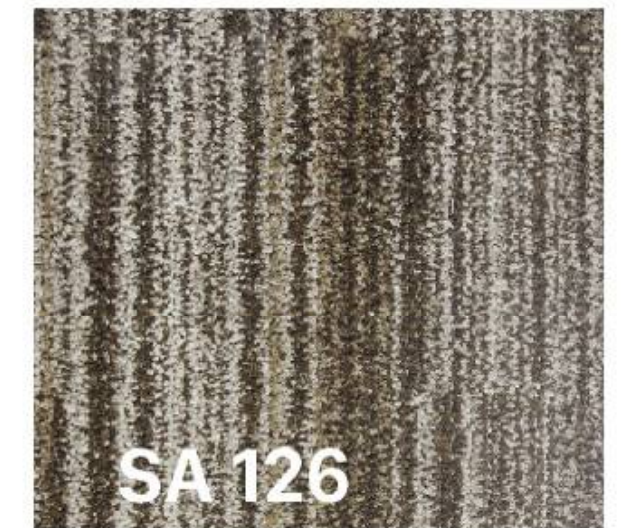


Colors of SPC Flooring

STONE



CARPET



Package design & loading

Packing standard: 10 planks/ box, 50-70 boxes/ pallet, 20 pallets/ 20ft container... Loading quantity depends on maximum gross weight allowed by destination port.

Plank dimensions (mm)	Thickness (Core + wearlayer) / wearlayer + pad thickness	Pallet size (mm)	Planks/ ctn	sqm/ ctn	Weight (kg)/ctn	ctn/ pallet	sqm/ pallet	plt/ 20' FCL	sqm/ 20' FCL	Weight (kg)/G.W
1220x228	6/0.5+2	1260x1,000	7	1947	24.5	52	101	20	2025	26000
1220x228	4/0.5 + 1.5	1260x1000	10	2782	22.2	45	125	18	2253	20000
1220x183	6/0.5+1.5	1260x1000	8	1786	22.32	50	89	18	1607	20000



Installation of the product



1 Step 1: Thoroughly check the location before installation



2 Step 2: Locate the first plank 3-5mm away from the wall. A multilayer design that includes underlayment will make it easier to install An Cuong flooring.



3 Step 3: Place the next plank to the first one according to the locking edge. Use a rubber hammer to tighten joints between the planks. Depending on the thickness of the flooring, add a pad to the floor edge before knocking to prevent breakage or deformation of the lock.



4 Step 4: Repeat those above steps until all the planks are installed.



5 Step 5: Finally, place the skirting board on the wall and fix it with a listello tile trim or silicon sealant to finish the work.



Quality control of SPC flooring

Product quality has always been our top priority. Thus, all of our products go through rigorous quality control process to meet the highest standards.



Gloss meter



Digital Caliper 0 - 300mm



Peel & Adhesion Testers



Taber Abrasion Tester



Digital Portable Thickness Gage



Digital Lab Weighing Scale



Castor Chair Test Apparatus



Profile Projector



Digital Caliper 0 - 2000mm



Automatic Residual
Depression Testing Machine



Programmable Temperature
Humidity Test Chamber



Scratch tester

Technical Data Sheet

	Standard	Detection Result
Wear Layer Thickness	ASTM F410	20 mil (0.5 mm)
Static Load	ASTM F970-17	Pass 720 psi at 0.007"
Slip Resistance	ASTM D2047-17	Dry condition : 0.42 Wet condition: 0.61
Staining Resistance	ASTM F925-13	Pass
Smoke Density	ASTM E662-2018	Pass (< 450)
Resistance to Light	ASTM F1700-18a Section 6.10 & ASTM F1515-03 (2008)	Pass (< 8.0 Delta E Requirement)
Impact Resistance	ASTM F1265-03a	Pass
Heat Stability	ASTM F1514-03	Pass
Reaction to Fire	ASTM E 648 -2017a	Class 2
Impact Sound Conduction	ASTM E492-09	IIC= 55 dB – with ceiling/ 65dB
Airborn Sound Conduction	ASTM E90-09	STC = 52 dB – with ceiling/ 62dB
Residual Indentation	ASTM F1914	Pass
Castor Chair Resistance	ASTM D6962	< 10000 cycles
Abrasion Resistance	ASTM 4060	Pass ≥ 6000 cycles
Locking System		UNICLIC
Adhesive		Not required, please install according to the instruction

Certifications of SPC flooring

CE Marking

FloorScore

Wear Layer Thickness

Static Load

Static Coefficient Of Friction

Staining Resistance (Resistance to Chemicals)

Smoke Density

Resistance To Light

Impact Resistance

Heat Stability

Critical Radiant Flux





PVC WALL PANELS introduction

Our wall boards are manufactured with modern advanced technology from Germany. This is a product using the world's leading advanced UV coating technology, making it a great choice for customers. The 2-layer structure of wall boards increases resistance to shock, deformation and fire, meeting the most stringent quality requirements of current projects.



Structure of PVC WALL PANELS

Technical data of PVC WALL PANELS

Thickness (Core + Wearlayer)	6.0 – 8.0 – 10.0 mm	
Dimension (Customized)	inch	mm
	110.24x23.62	12800x600
	110.24x15.75	2800x400
Ceiling fins panel	inch	mm
	118.11x6.3x0.393	3000x160x10



Advantages of PVC WALL PANELS



WATERPROOF AND DAMPPROOF



FIRE RETARDANT



SCRATCH RESISTANCE



EASY TO CLEAN



SOUND ABSORBANCE



HIGH STRENGTH
(10-20 YEARS
OF USE)

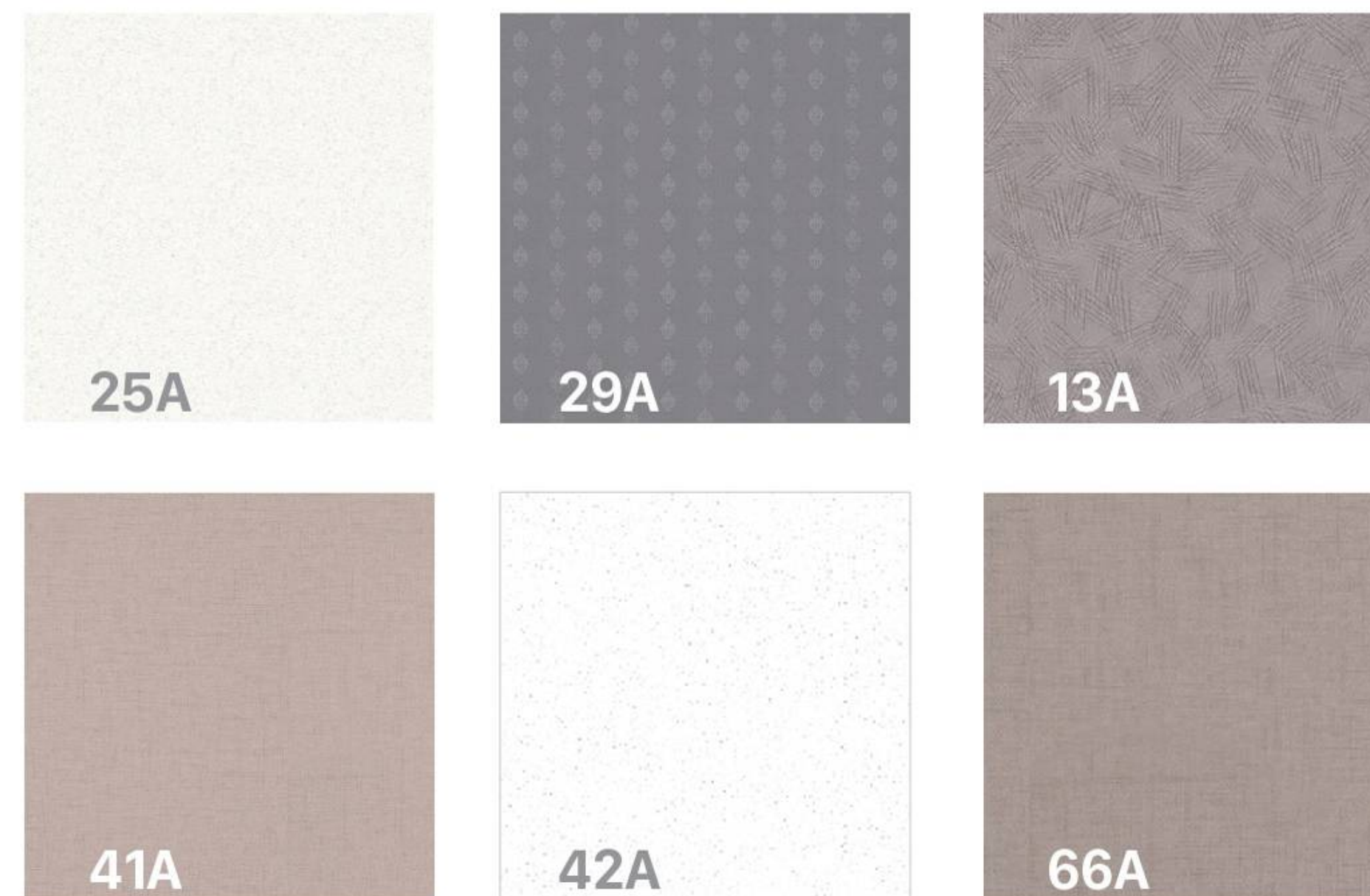


FAST, EASY INSTALLATION ON ANY SURFACE
AND CAN BE USED FOR DIFFERENT TYPES
OF PROJECTS

Colors of PVC WALL PANELS

WALLPAPER

* Other decorative film colors
are available as custom orderst



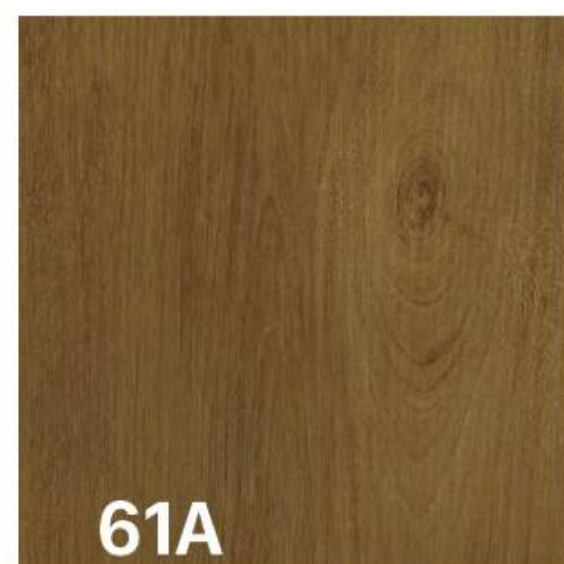
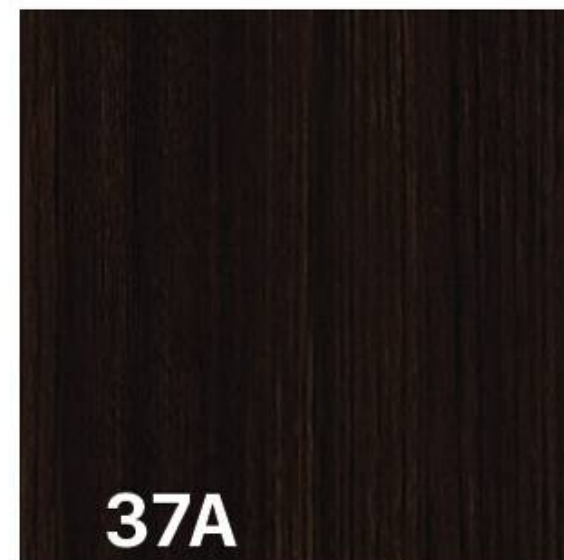
STONE

* Other decorative film colors are available as custom orderst



Colors of PVC WALL PANELS

WOOD *Other decorative film colors are available as custom orderst



Installation of the product



1 Measure the area of the wall prior to application with wire gauge or lazer



2 Mark the exact position of the first plate on the wall



3 Use the first grub screw on the wall



4 Put the hinged lock on the first plate, use a hatch or a nail gun to lock the hatch and the plate to the wall



Execution of plaster walls, iron frames or wooden frames follow the same steps



5 Fit the next plate into the plate before the yin yang



6 Do the same thing until the wall is completed



7 Bending the grooved sheet at the location next to the wall, corner and fixed with adhesive



Certifications of PVC WALL PANELS



